



# Supporting Dyslexia at Oasis Academy Arena

Dyslexia is a **common learning difficulty that mainly causes problems with reading, writing and spelling**. It's a specific learning difficulty, which means it causes problems with certain abilities used for learning, such as reading and writing.

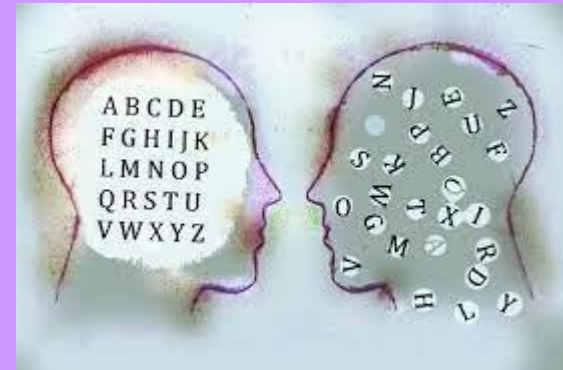
When student displays signs of dyslexia in learning the first step is to complete a dyslexia screening check.

This gives the probability of a student having dyslexia and indicates the area of need.

As a school we share this with parents / carers and staff

We then use the following to support the student at school:

- Not asking children to read aloud in lessons – unless they would like to
- Test for a coloured overlay to see if this helps with reading – this can make reading easier due to a reduction of visual distortions or improved clarity or comfort)
- Touchtyping – this can enable students to recall letter sound correspondence more easily than forming letters when writing.
- DocsPlus – this is an organisational tool which supports children with their work.
- Access arrangements for exams



We do not seek a formal diagnosis as the support within school will not change if there is a formal diagnosis.